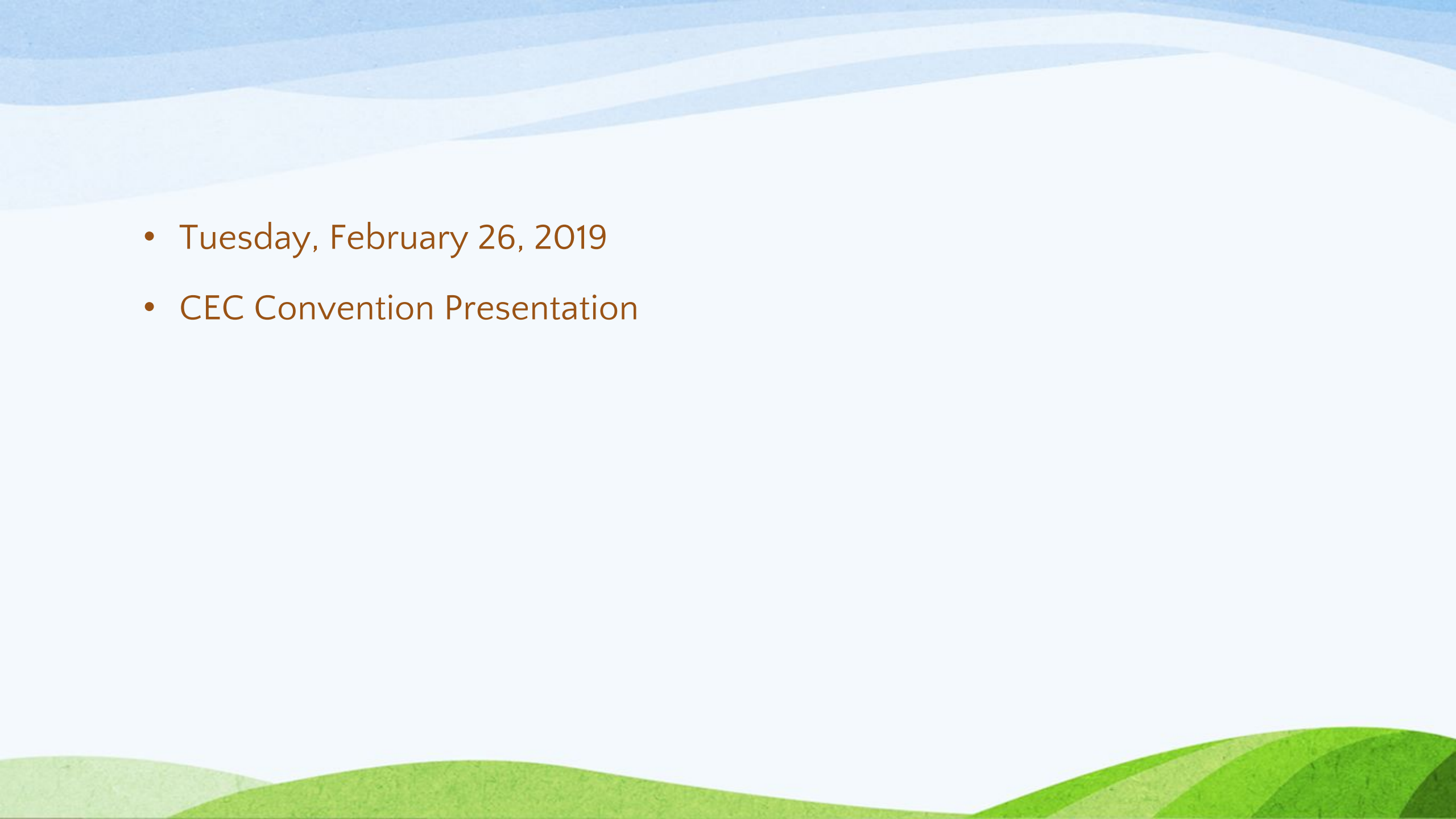


- 
- Tuesday, February 26, 2019
  - CEC Convention Presentation







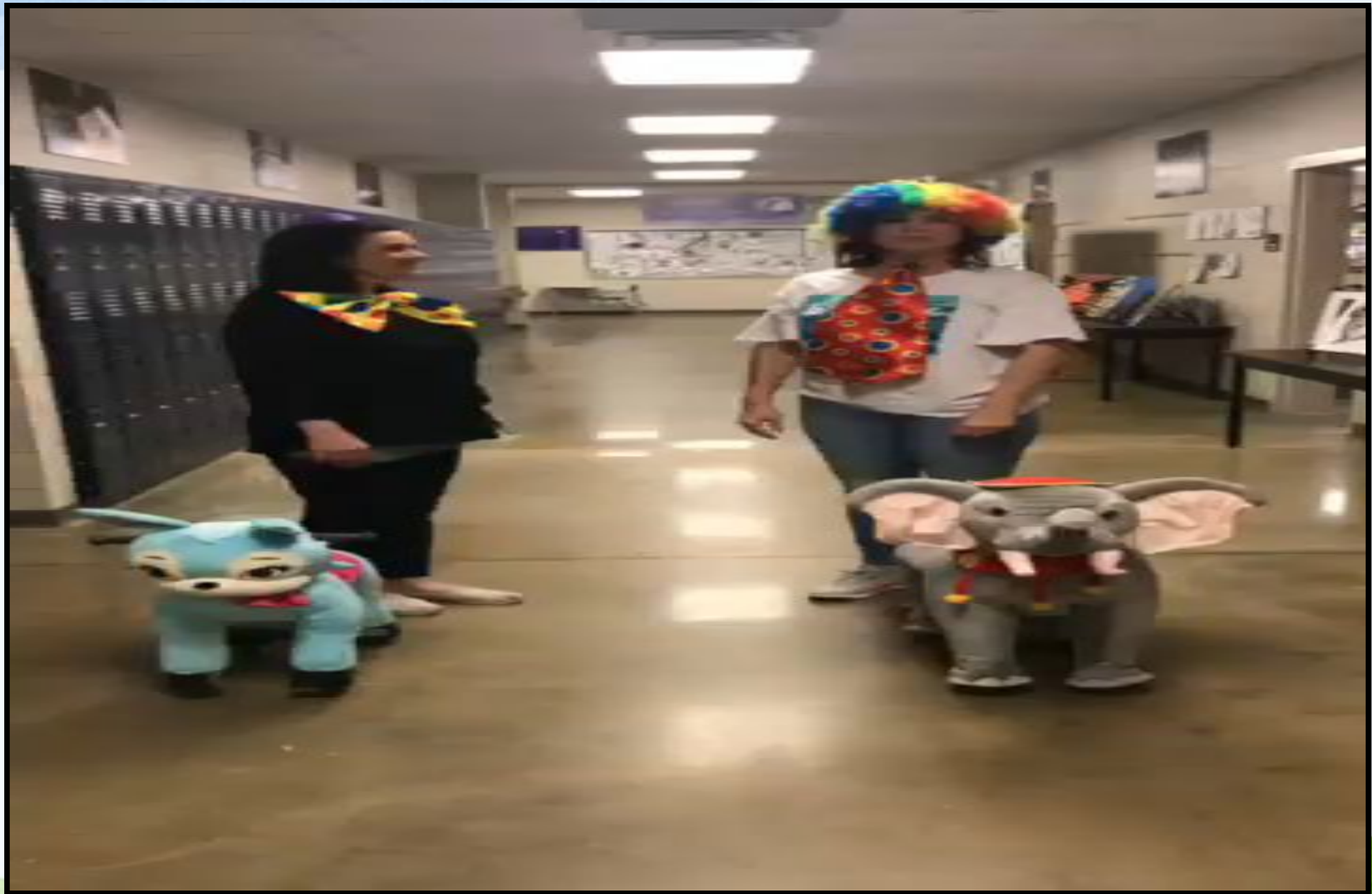














A stylized, colorful illustration of a landscape. The foreground features rolling green hills with a brown path. On the left, there is a green tree, a purple flower, and an orange flower. A small orange bird is flying in the sky. The background consists of layered blue and white wavy bands representing the sky.

REACH

Respect Everyone And  
Create Harmony

CAMP UP!

(United & Passionate)

# Presenters

- Leslie Wascom, APE Teacher, Camp UP Co-owner (Leslie.Wascom@lpsb.org)
- Jessica Bonura, Special Education Teacher, REACH Club Sponsor, Camp UP Co-owner (Jessica.Bonura@lpsb.org)
- Kristen Ardoin, Creator of REACH Club, Special Education Teacher (kristen.ardoin@cpsb.org)
- Kamryn Duncan, Current REACH Club President (kduncan3@stu.lpsb.org)



# Presentation Purpose:

- To share how the REACH club transformed our school into a culture of inclusion.
- To share how Camp UP has transformed our community into a culture of inclusion.
- To provide information to assist in transforming your school and community into a culture of inclusion.

*“Inclusion is not a program. Inclusion is a mindset. It is the way we treat others and the way they treat us. Inclusion is the opportunity to learn together and from one another. And we do it because it is the right thing to do.”*

# Inception of REACH Club

- Why?
- When?
- How?

REACH Club has inspired high schools, middle schools and even elementary schools to create clubs with similar goals and values.

**Never believe that a few caring people can't change the world.**

**For, indeed, that's all who ever have.**

**~ Margaret Mead**



# REACH Interviews



Interviews are held to ensure that students understand the standards and expectations of the REACH club. Importance is placed on application of inclusion in school as well as in the community.

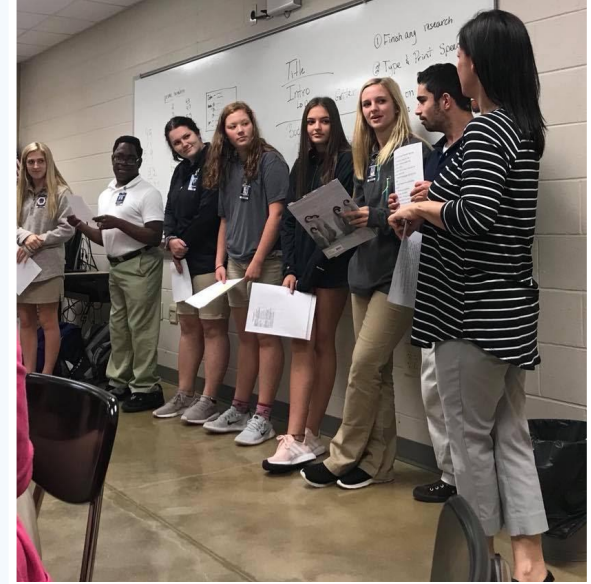
# Annual REACH Retreat:



Elementary REACH focuses on kindness and acceptance.



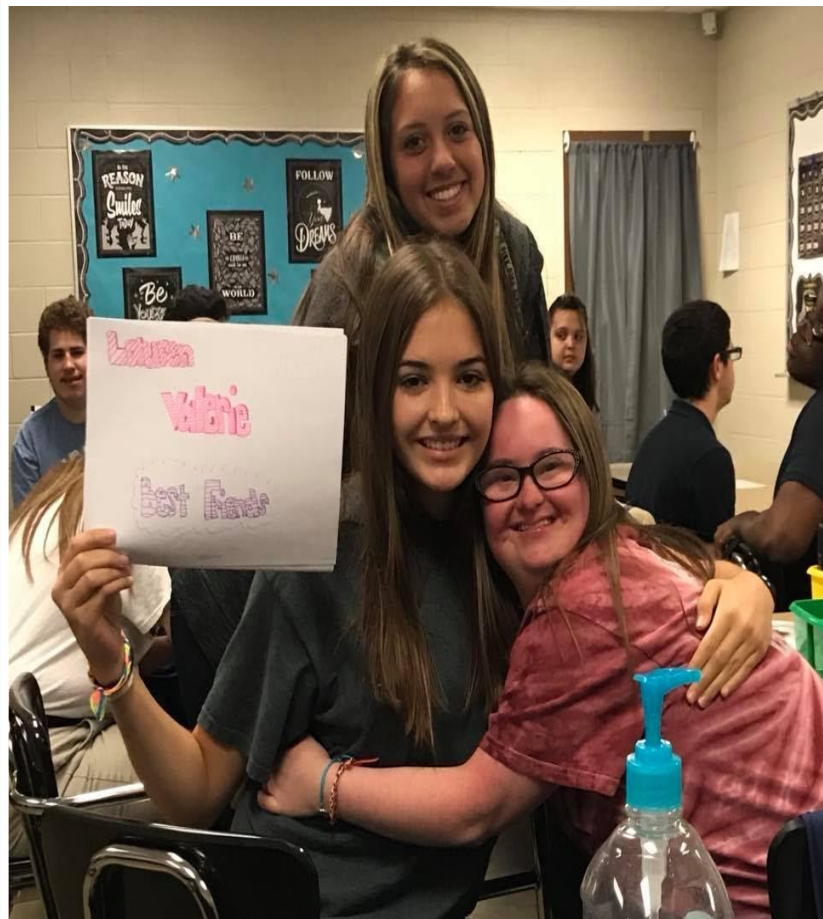
Middle School REACH focuses on empathy and similarities.



High School REACH focuses on the power of words (PFL).



# School Connections





## School Connections



# Field Trips!!



Pumpkin Patch

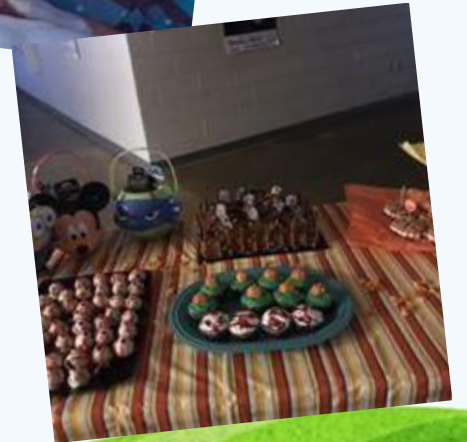
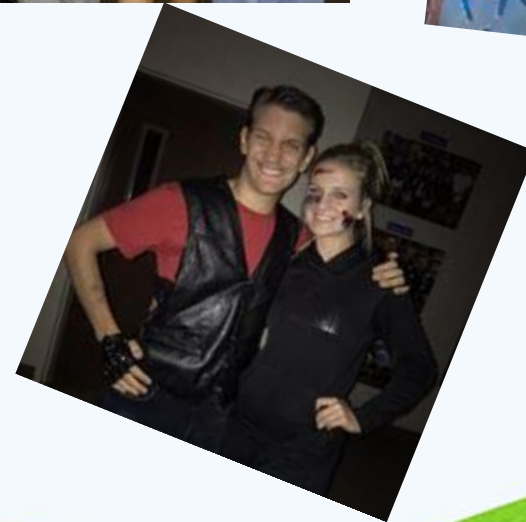
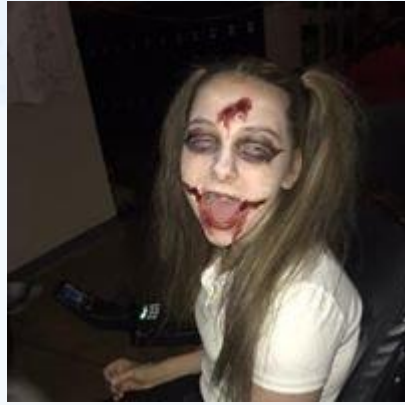


Fair



Airborne Extreme

# Halloween Party



# Christmas Celebration

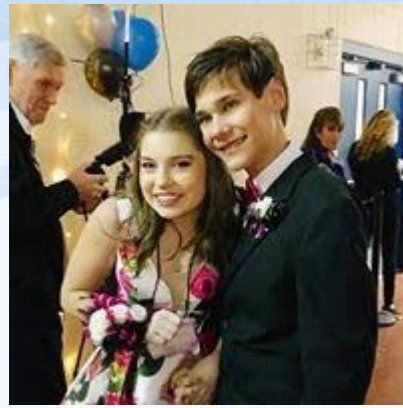


# Bonfire



# Girl's Night





# Night to Shine sponsored by the Tim Tebow Foundation





OPPORTUNITIES DON'T JUST HAPPEN **YOU**  
CREATE THEM!



**BE TOGETHER NOT THE SAME**

During the month of October, the world celebrates individuals with Down syndrome and brings awareness to their awesome abilities and accomplishments. Tonight, we want to **EXPAND** our celebration to include all individuals in the LO community that are diagnosed with a disability. Furthermore, we want to celebrate individuals **WITHOUT** disabilities that choose to go past differences and see similarities. We are celebrating **FRIENDSHIPS** among people with and without disabilities. We are so proud to live in a community where barriers continue to be broken down, acceptance continues to be encouraged, and genuine friendships continue to be made. On the field tonight, you are looking upon individuals in our community that are a part of having created a culture of acceptance, respect, and kindness. Please help us celebrate these individuals that are making a positive difference in our phenomenal community of **LIVE OAK!!**

A stylized landscape illustration. The background features wavy, layered bands of light blue and white, suggesting a sky or mist. In the foreground, there are rolling green hills of varying shades. On the left side, a tree with a dark brown trunk and several large, rounded, overlapping leaves in shades of purple and pink stands on a small mound. At the base of the tree, there are several orange and brown rounded shapes, possibly representing rocks or a small garden.

# CAMP UP!

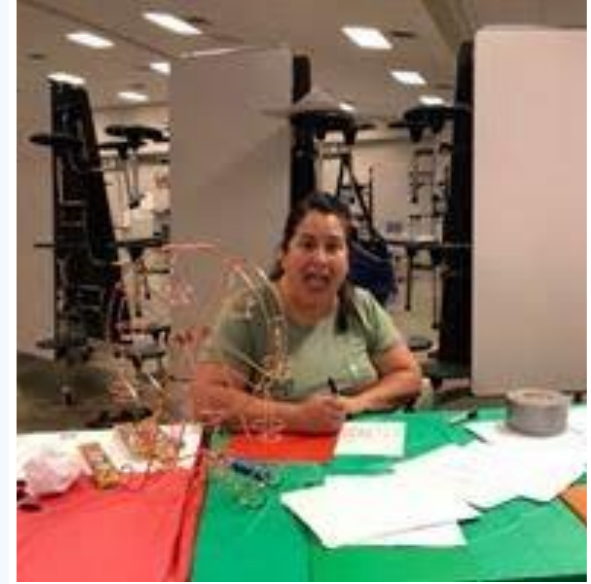
An inclusive summer camp that values kindness & acceptance by joining together people with all abilities through fun and creative activities!

# Camp UP Founders:



Mission: To implement an inclusive camp that nurtures relationships between children with and without disabilities in order to create friendships and to teach that we can be together, not the same.

## Camp UP Staff:



**Camp UP provides the necessary resources to assure each camper is well cared for while attending Camp UP.**

# Camp UP Counselors:



Campers are assigned an experienced REACH member that serves as their counselor for the week. We aren't sure who has more fun????!! Counselors? Campers??

# Camp UP Community Volunteers



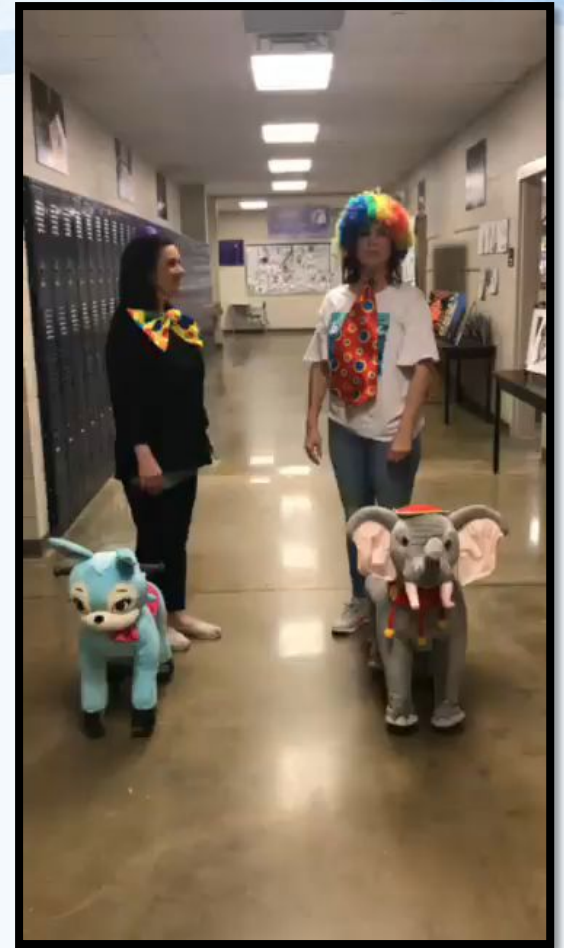
Magician (local entertainer)



Photo Op with Mickey and Minnie (local teachers)

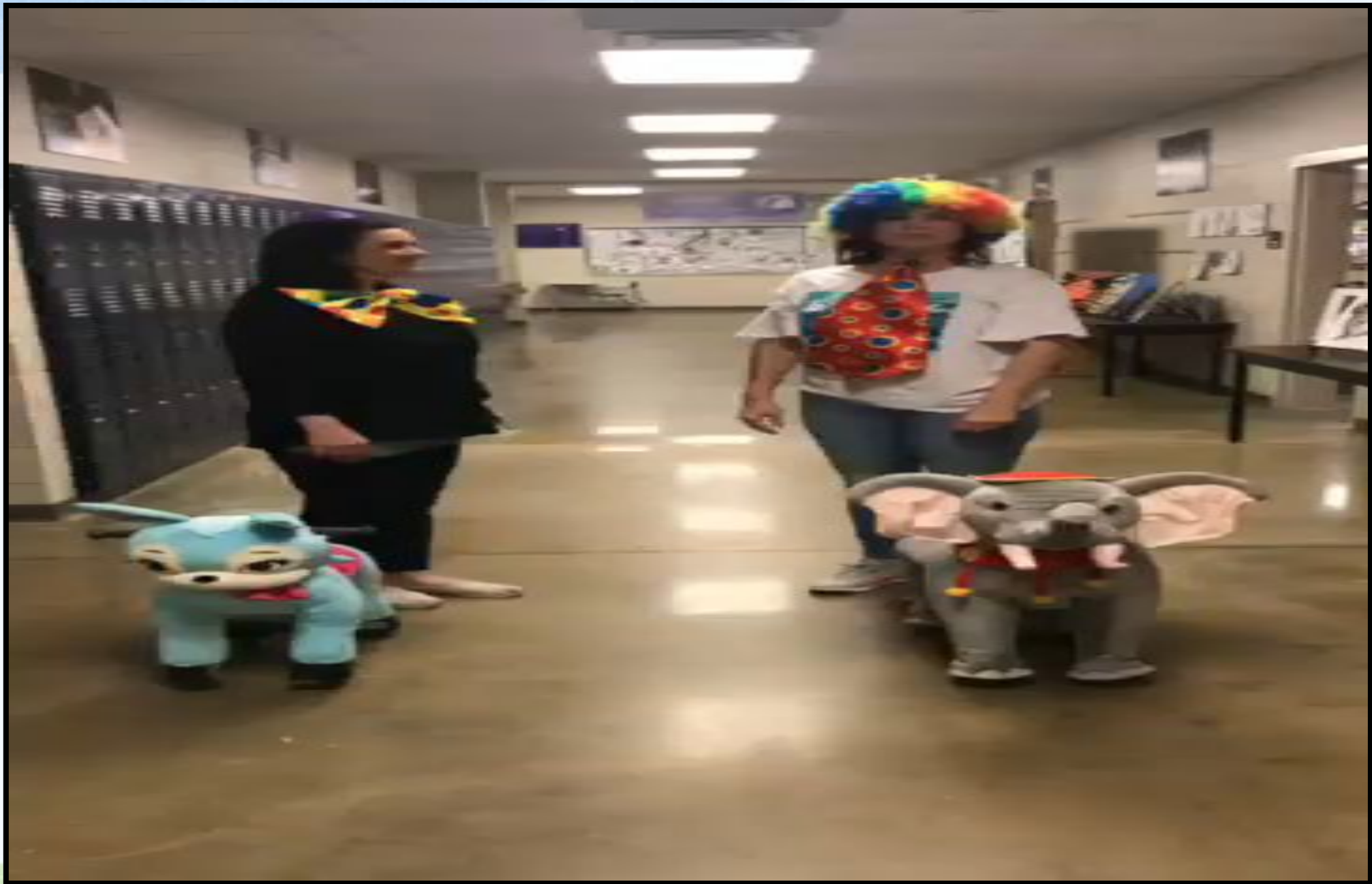


Face Painting (parent)



ADVERTISE!





# 2016 SUMMER THEME: **CAMPING**

CUBS            3-5yrs  
RACCOONS    6-8yrs  
RABBITS    9-11yrs  
DEER            12yrs & up



# 2017 SUMMER THEME: SHIPWRECKED

SWABBIES 3-5yrs  
PIRATES 6-8yrs  
SKIPPERS 9-11yrs  
CAPTAINS 12yrs & up



# 2018 SUMMER THEME: CIRCUS

JUGGLERS 3-5yrs

MAGICIANS 6-8yrs

LION TAMERS 9-11yrs

ACROBATS 12yrs & up



# Inclusion fosters.....

Compassion

A Sense of Belonging

Understanding

Kindness

Acceptance











*“Because of Camp Up, my youngest daughter was able to attend Camp with her sisters! This Camp fosters a culture of love and acceptance. It teaches children to see similarities in us all, not the differences. My girls absolutely love Camp Up and look forward to the camps. I would highly recommend Camp Up to anyone with or without a child with a disability.”*



*“This camp is the best camp in Livingston Parish. It is a camp that accepts everyone and is prepared to handle our children and allow them all to enjoy having fun! Anyone who has a child with a disability has shared this thought, I wish my child could play like I did as a child. This thought is heartbreaking when you have a child with a disability but thanks to this camp your child can play and have the best week with other children! That is priceless for a mother like myself.”*

To make a difference in someone's life,  
you don't have to be beautiful, rich, brilliant, or perfect.



You just have to care.

And even though we look like this  
at the end of each camp,



IT IS ALL  
WORTH  
IT!!!

# LIVE OAK HIGH REACH CLUB

[WWW.LIVEOAKREACH.COM](http://WWW.LIVEOAKREACH.COM)

LOH REACH CLUB (FACEBOOK)

LIVEOAKREACH (INSTAGRAM)

@reach\_live (TWITTER)

# CAMP UP!

[WWW.2015CAMPUP.WEEBLY.COM](http://WWW.2015CAMPUP.WEEBLY.COM)

CAMP UP (FACEBOOK)

